

# TOKIO

*Tokyo* Tokyo



# TOKIO, CIUDAD DE CONTRASTES



Asakusa



Palacio Imperial

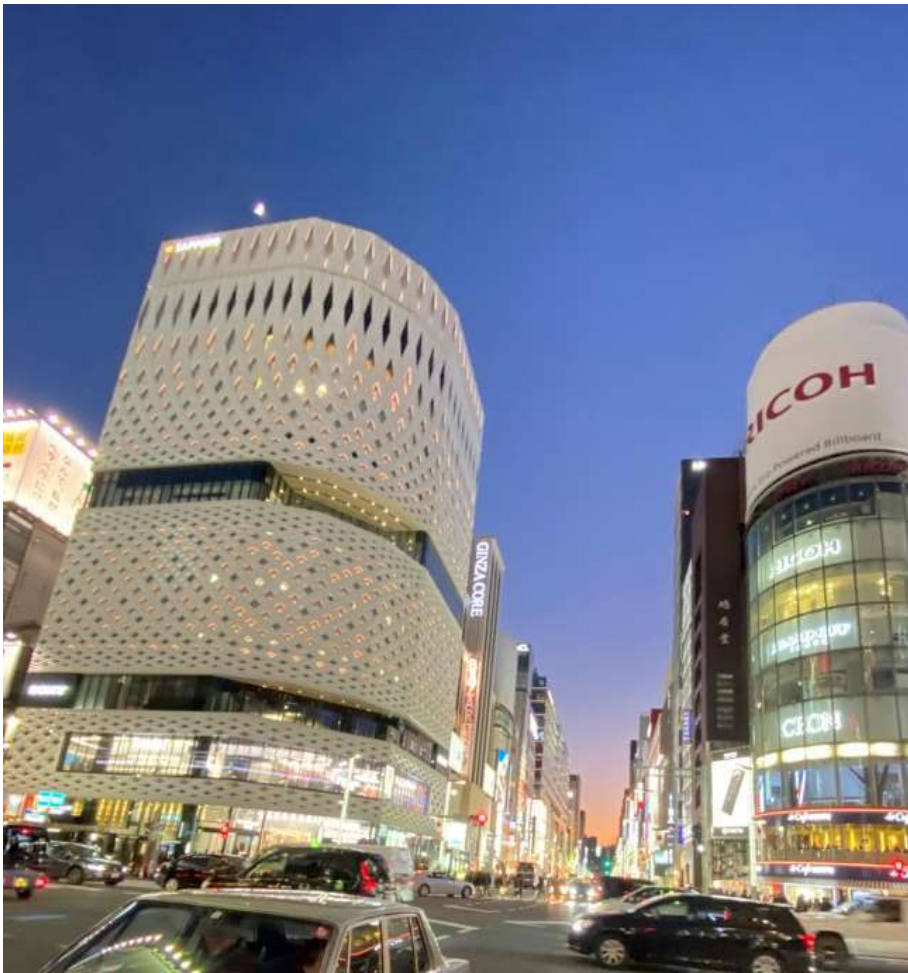


Odaiba





SHINJUKU



GINZA



Desde el cielo



De día



Y de noche



**Más allá de los rascacielos**





Auténticos barrios tukiotas:  
Kichijoji, Shimokitazawa...

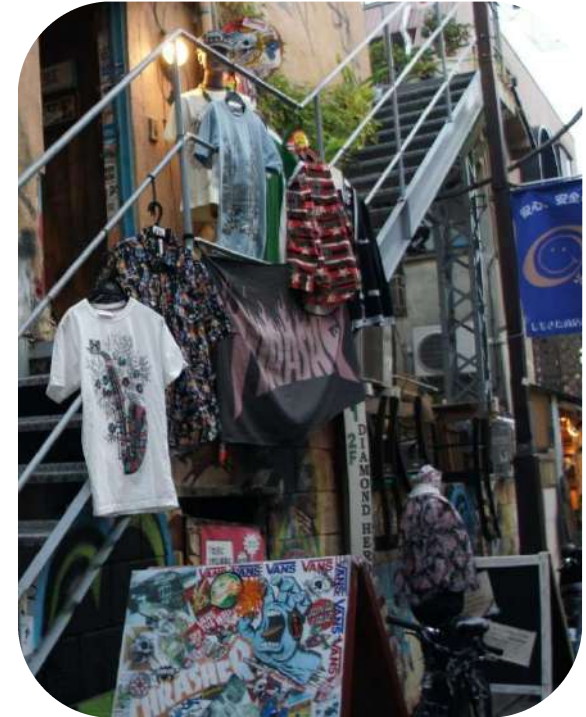




Parque  
Inokashira  
(Kichijoji)



Shimokitazawa



Shimokitazawa

Tokyo.Tokyo

TOKYO METROPOLITAN GOVERNMENT



Koenji

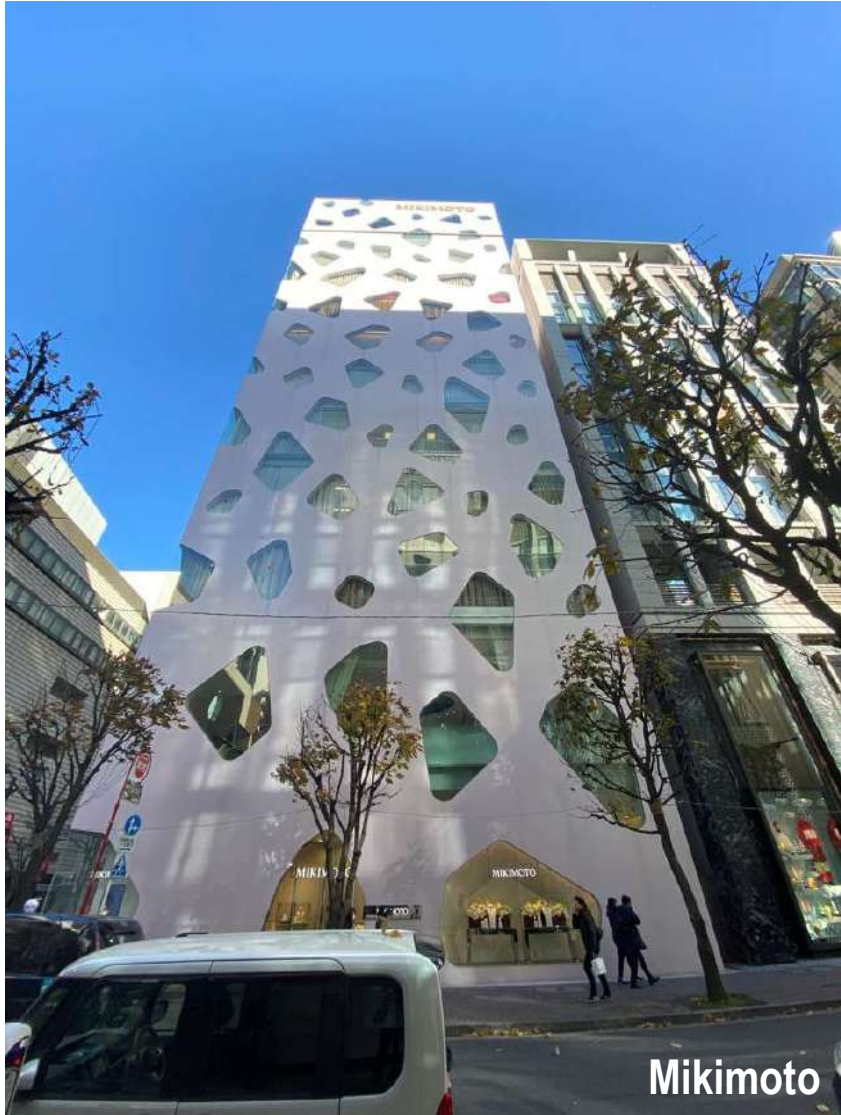
# La sorprendente arquitectura de Tokio



Wako



Nissan



Mikimoto



GUCCI



V88 Building



Bottega Veneta



**BOSS**  
HUGO BOSS

BOSS

TODS



Nakagin Capsule Tower



Shizuoka Shinbun



TOKIO CAMII



Tokyo International Forum



Prada



Mode Gakuen Cocoon Tower



The National Art Center



Catedral de Santa María



Rascacielos de Shinjuku



La otra cara de Tokio

Museo de Nezu







Shinjuku Gyoen



Koishikawa Korakuen



Tokyo.Tokyo

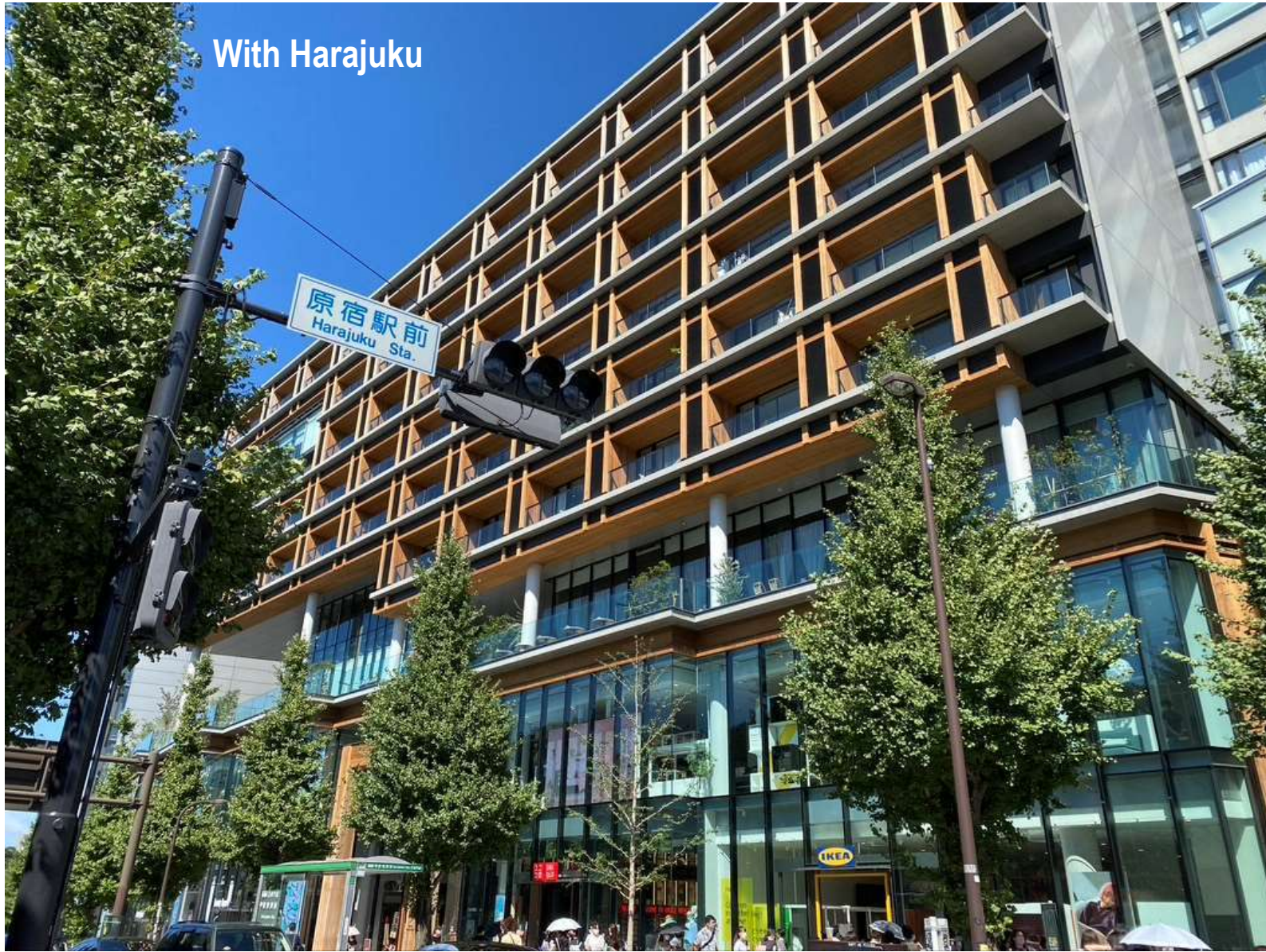
TOKYO METROPOLITAN GOVERNMENT

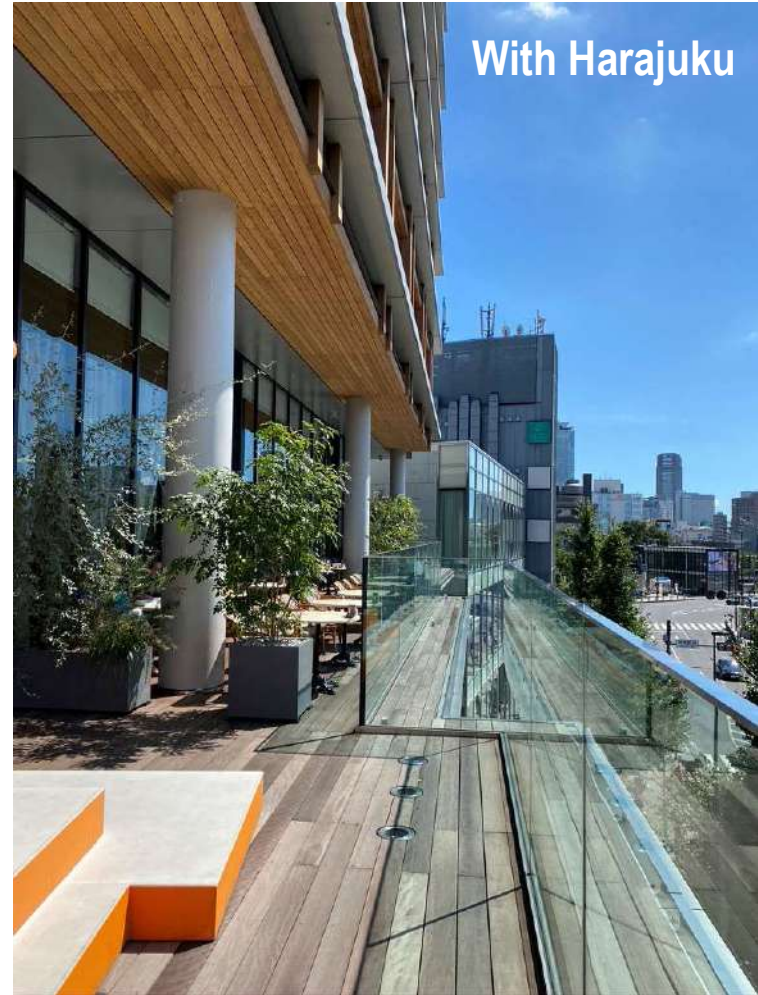
Una ciudad siempre cambiante



Harajuku

With Harajuku







Miyashita  
Park





Shibuya  
Yokocho





Toranomon  
Hills Business  
Tower

Tokyo.Tokyo



Toranomon Yokocho

TOKYO METROPOLITAN GOVERNMENT

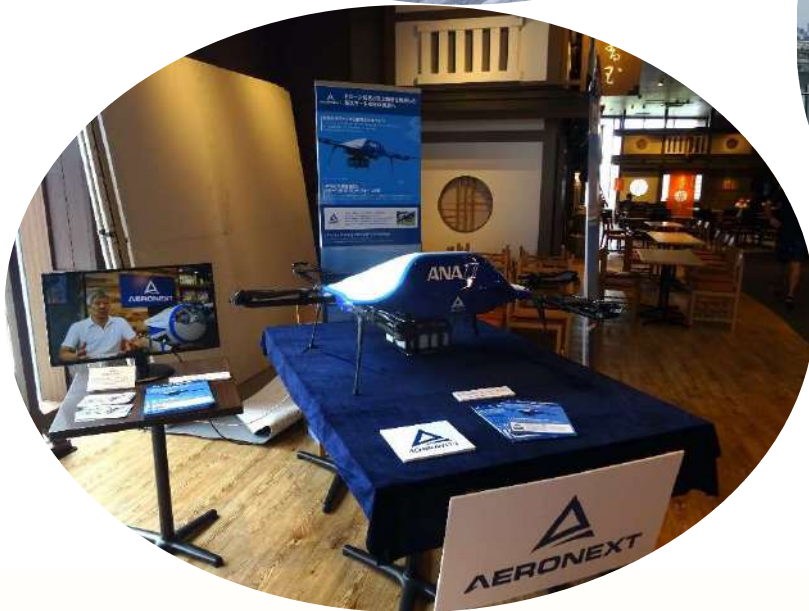


Haneda  
Innovation  
City

Tokyo.Tokyo

<https://haneda-innovation-city.com>

TOKYO METROPOLITAN GOVERNMENT



# Haneda Innovation City

Tokyo.Tokyo

TOKYO METROPOLITAN GOVERNMENT



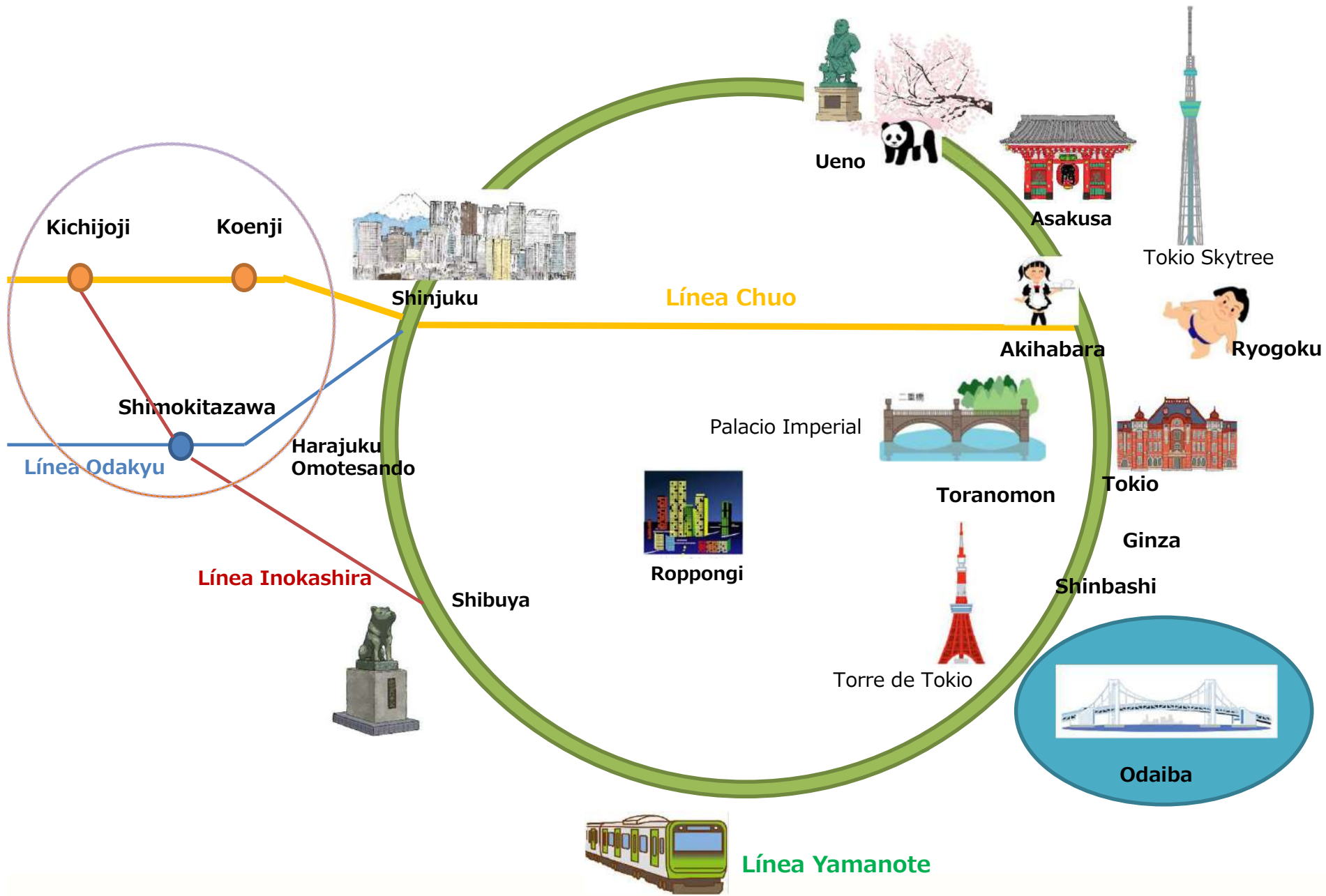
**RYOKAN &  
ONSEN  
YUEN BETTEI  
Daita  
(Shimokitazawa)**

**Tokyo.Tokyo**

<https://www.uds-hotels.com/yuenbettei/daita>

TOKYO METROPOLITAN GOVERNMENT







<https://www.gotokyo.org/es/index.html>



MUCHAS GRACIAS

Tokyo.Tokyo

TAEKO UEDA  
[tokyo.rep.es@gmail.com](mailto:tokyo.rep.es@gmail.com)

TOKYO METROPOLITAN GOVERNMENT